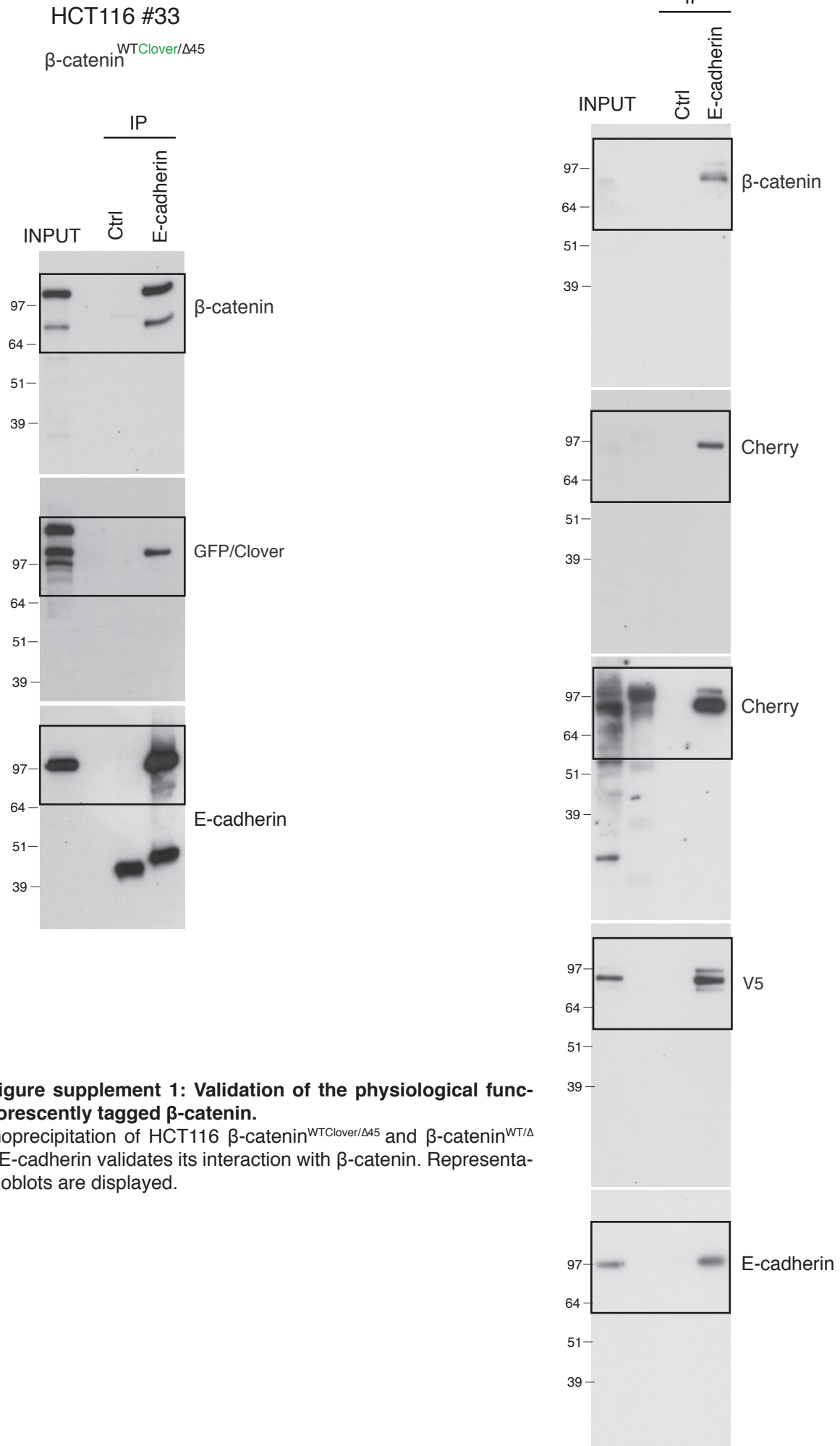


**Figure 3. Fluorescently tagged  $\beta$ -catenin variants are functional and localize to adherens junctions.**  
**(E)** Immunoprecipitation of HCT116 clone  $\beta$ -catenin<sup>WT<sup>Clover</sup> /  $\Delta$ 45<sup>Cherry</sup></sup> with E-cadherin confirms its interaction with  $\beta$ -catenin. Representative results from three independent experiments are shown.



**Figure 3-figure supplement 1: Validation of the physiological function of fluorescently tagged  $\beta$ -catenin.**

**(C)** Immunoprecipitation of HCT116  $\beta$ -catenin<sup>WTClover/ $\Delta$ 45</sup> and  $\beta$ -catenin<sup>WT/ $\Delta$ 45Cherry</sup> with E-cadherin validates its interaction with  $\beta$ -catenin. Representative immunoblots are displayed.